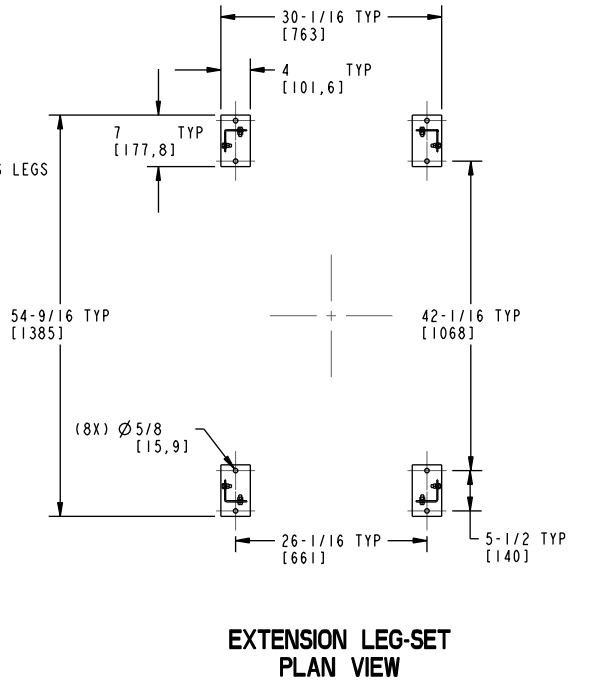
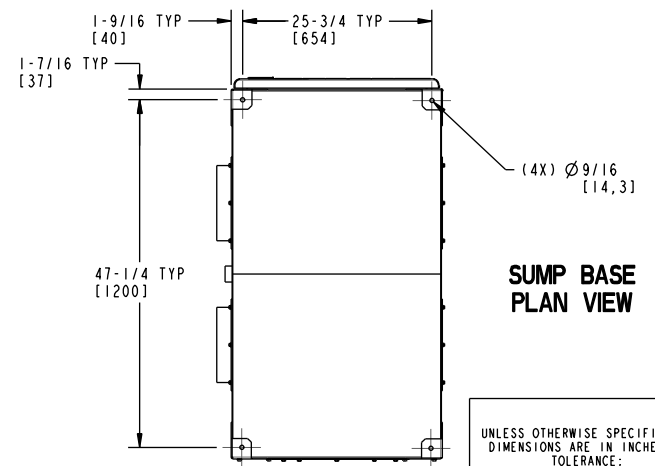
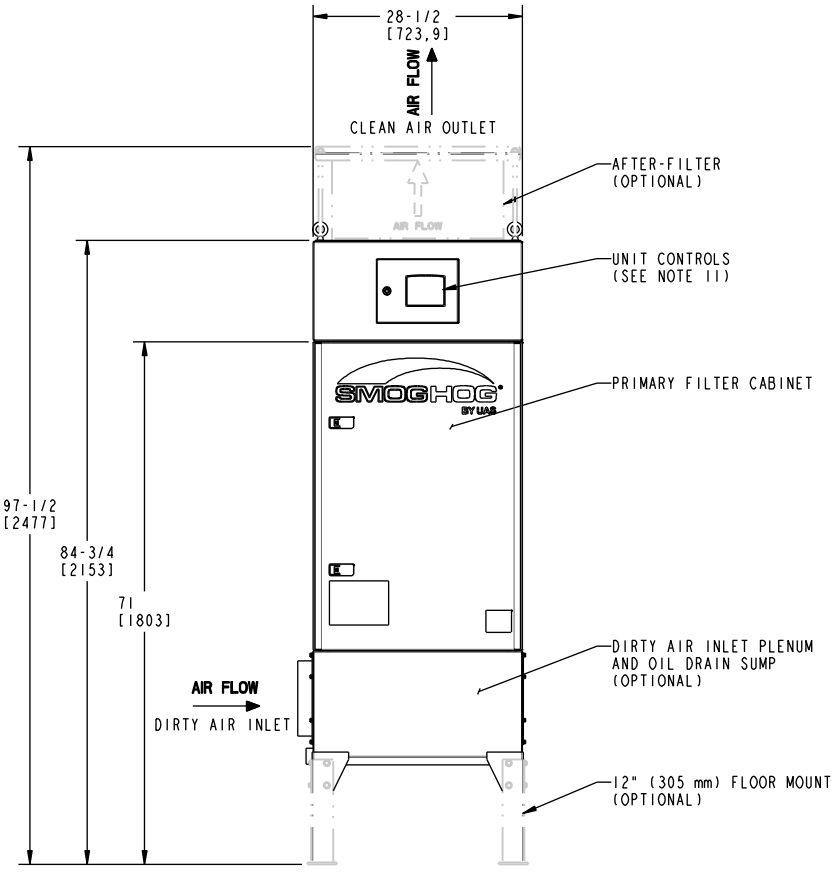
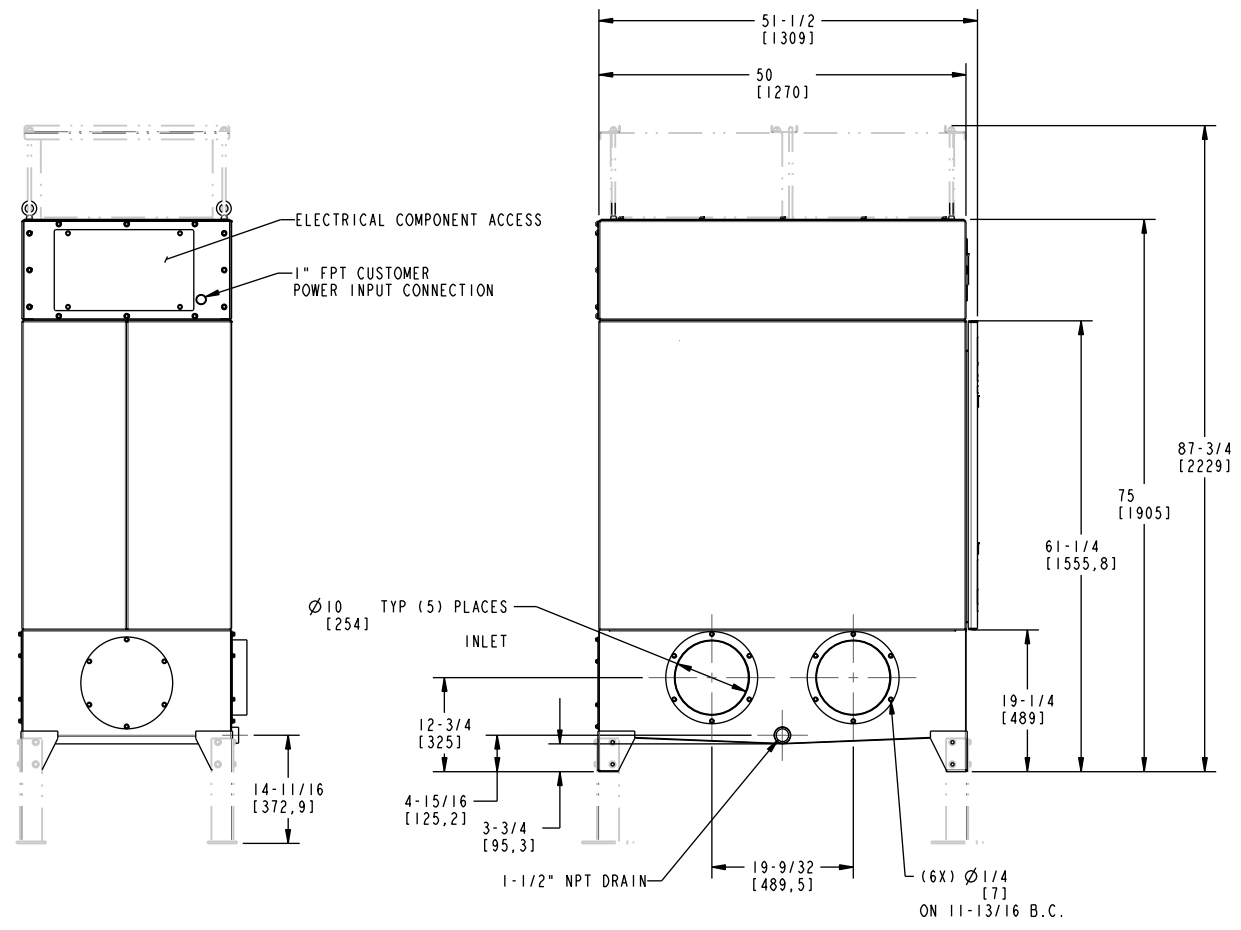
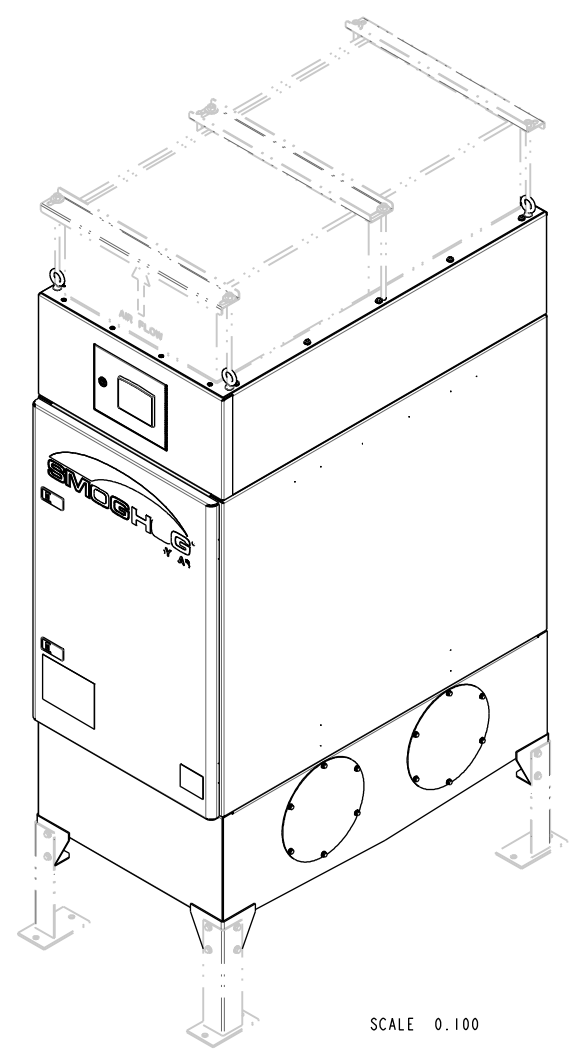
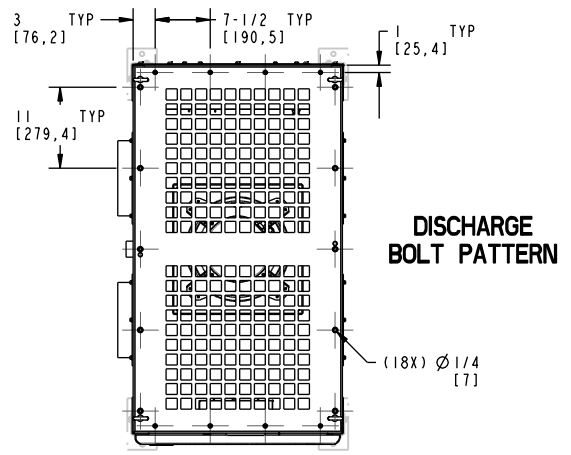


REVISIONS			
LTR	DESCRIPTION	DATE	APPROVED

- NOTES:
- BLOWER / MOTOR: 5 HP (3.9 kW)
  - NOMINAL AIRFLOW: 2,400 CFM (4,078 m<sup>3</sup>/HR)
  - INPUT VOLTAGE: 380 - 480 VAC / 3 PH / 50 - 60 HZ (6.7 / 5.5 FLA)
  - APPROXIMATE UNIT WEIGHT: 1000 LBS (454 kg)
  - PRIMARY FILTER AREA: (2) FILTERS @ 104 FT<sup>2</sup> (9.7 m<sup>2</sup>) / TOTAL AREA: 208 FT<sup>2</sup> (19.3 m<sup>2</sup>)
  - AFTER FILTER DIMENSIONS: 23-3/8" (594 mm) X 23-3/8" (594 mm) X 11-1/2" (292 mm)
  - CABINET CONSTRUCTION: 12 GA. (0.1046 IN (2.7 mm)) THICK MILD CARBON STEEL
  - COLOR: WHITE, PHOSPHATIZED AND BAKED POWDER COATED FINISH INSIDE AND OUT, 750 HOUR SALT SPRAY TEST (PER ASTM B1117)
  - MINIMUM SUGGESTED CLEARANCE: 30" (762 mm) FRONT; 24" (610 mm) REAR
  - FILTER STAGES:
    - STAGE 1: MIST STOP FINE FIBER ALUMINUM MESH
    - STAGE 2: PRIMARY FIBERGLASS BAG
    - STAGE 3 (OPTIONAL): MICROGUARD O/M, 95% @ 0.3 μm - OR - HEPA, 99.97% @ 0.3 μm
  - UNIT CONTROLS INCLUDE TOUCH SCREEN DISPLAY WITH DIGITAL PRESSURE AND BLOWER CONTROLS  
ADDITIONAL CONTROL OPTIONS INCLUDE:  
AUTOFLOW KIT TO MONITOR AND MAINTAIN CONSTANT AIRFLOW  
REMOTE CONTROL ENCLOSURE  
STEP DOWN TRANSFORMER FOR 575V SERVICE
  - 10" (254 mm) DIRTY AIR INLET(S) AVAILABLE ON RIGHT, LEFT AND REAR OF UNIT



UNLESS OTHERWISE SPECIFIED: DIMENSIONS ARE IN INCHES. TOLERANCE: FRAC. DEC. ANGLES ± N/A ± N/A ± N/A	SIGNATURES	MO-DA-YR	DESCRIPTION	SIZE	PART NUMBER	REV
	DRAWN: GMG	1/06/16	SHM-12F	D	44-10626	-
	CHECK: -	-		SCALE: 0.080	SHEET 1 of 1	

