

CONFIDENTIAL: THIS DOCUMENT CONTAINS INFORMATION WHICH IS PROPRIETARY TO UAS, AND SHOULD BE PROTECTED ACCORDINGLY.

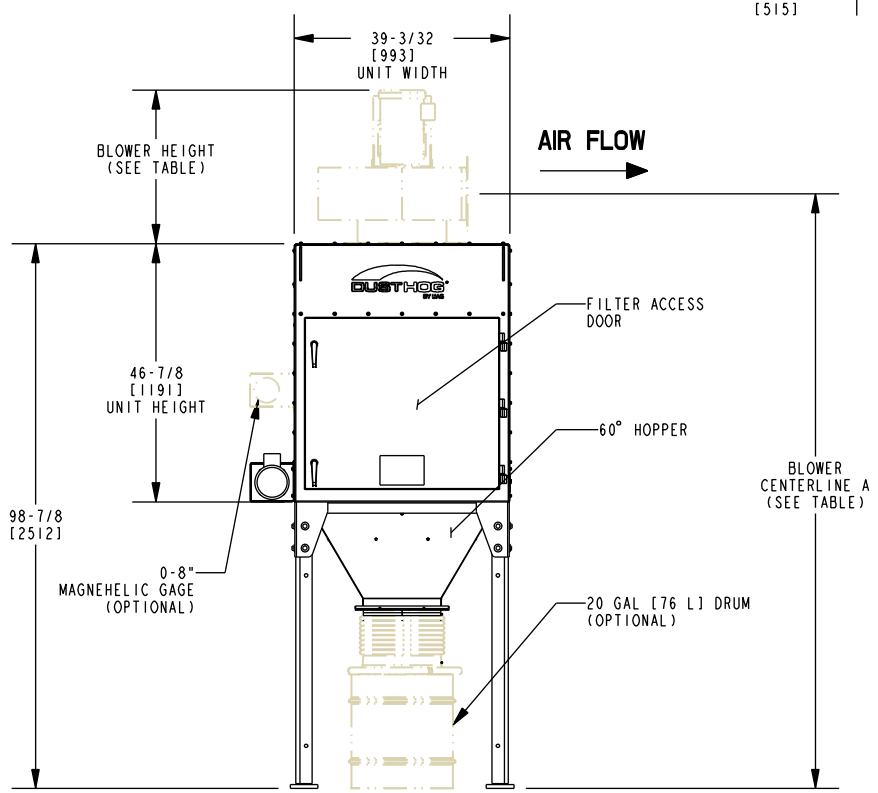
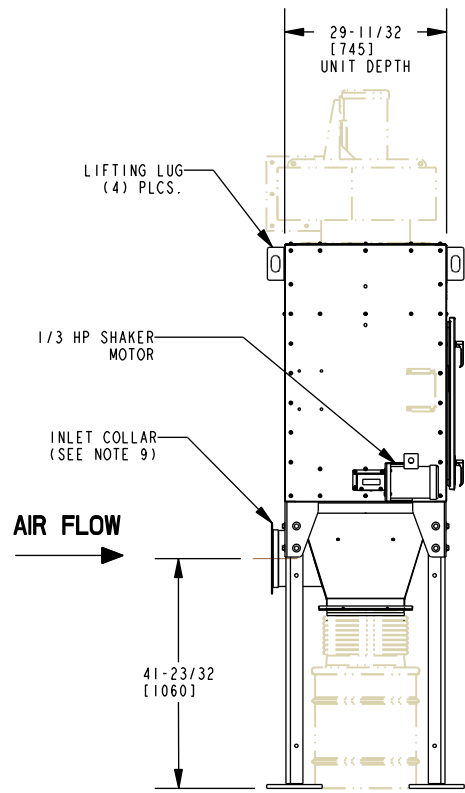
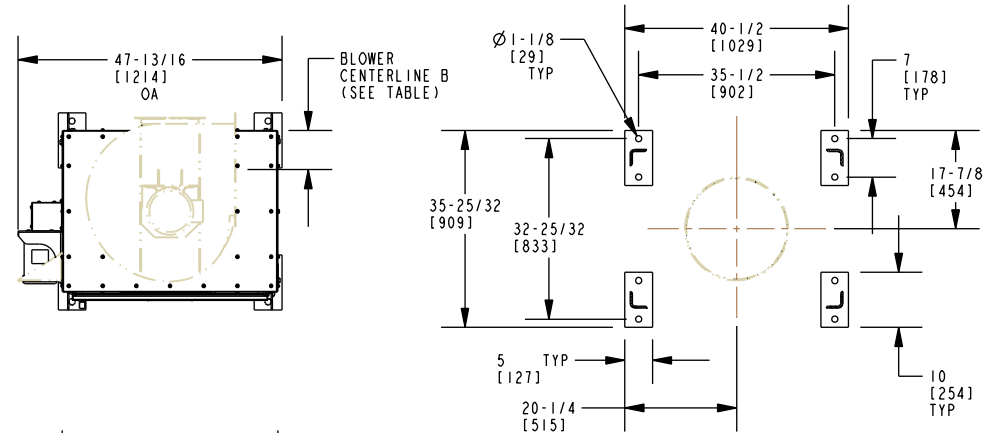
THIS DRAWING IS NOT TO BE SCALED. FOR ADDITIONAL INFORMATION, PLEASE CONTACT OUR ENGINEERING DEPT.

REVISIONS				
LTR	ECN	DESCRIPTION	DATE	APPROVED
A	N/A	REVISED LABEL	6/22/16	NRL

SYSTEM SPECIFICATIONS:

- | | |
|--------------------------------|---|
| 1. FILTER SPECIFICATIONS | 9 oz. [266 ml] POLYESTER SATEEN (STD) |
| 2. FILTER AREA: | 211 FT ² [20 m ²] |
| 3. TOTAL UNIT WEIGHT (APPROX): | 715 LBS [324 Kg] (LESS BLOWER) |
| 4. SEISMIC ZONE: | ZONE 4 |
| 5. WIND LOADING: | 100 MPH [161 Km/h] |
| 6. CABINET PRESSURE RATING: | ±20" W.G. [4976 Pa] |
| 7. CABINET FINISH: | GREY POWDER COAT (INTERIOR AND EXTERIOR)
MEETS 750 HR SALT SPRAY TEST PER ASTM B117. |
| 8. INPUT POWER OPTIONS: | 230V/460V/575V, 3PH, 60 Hz |
| 9. STANDARD INLET OPTIONS: | FLANGED OR SLIP COLLAR
8" [203] OR 10" [254] DIAMETER |

BLOWER OPTIONS			
HP	HEIGHT	CENTERLINE A	CENTERLINE B
3	21-7/16 [545]	104-5/16 [2650]	7-13/32 [188]
5	27-7/8 [708]	107-3/16 [2723]	7-3/32 [180]



UNLESS OTHERWISE SPECIFIED:
DIMENSIONS ARE IN INCHES.
TOLERANCE:
FRAC. DECI. ANGLES
± N/A ± N/A ± N/A

SIGNATURES	MO-DA-YR
DRAWN: RPK	3/13/12
CHECK: WDF	3/13/12

DESCRIPTION
SDC-210, 20 GAL

SIZE	PART NUMBER
A	44-10541-1
SCALE:	0.029

REV
A



UNITED AIR SPECIALISTS
CINCINNATI, OHIO